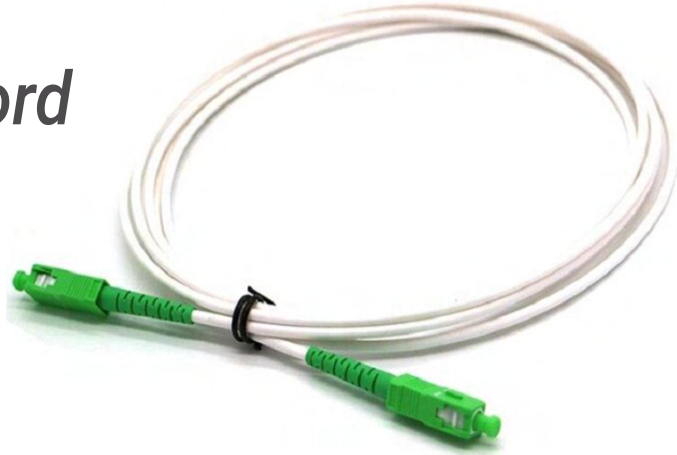


# White Fiber Patch Cord SM Simplex 5MTR SC/APC-SMS5



## Patch cord SM G657B3 SC/APC-SC/APC Flexible White Cable

Simplex SC/APC Fiber Optic Patch cord with G.657.B3 fiber are a suitable solution for FTTH end connection of ONT units, or in high-density switchboards where there is a risk of critical bending. The G.657.B3 fiber is resistant to 0.5 cm macro-bends, and thus ensures full transmission of the light signal even under difficult conditions of mechanical deformation.

### FEATURE

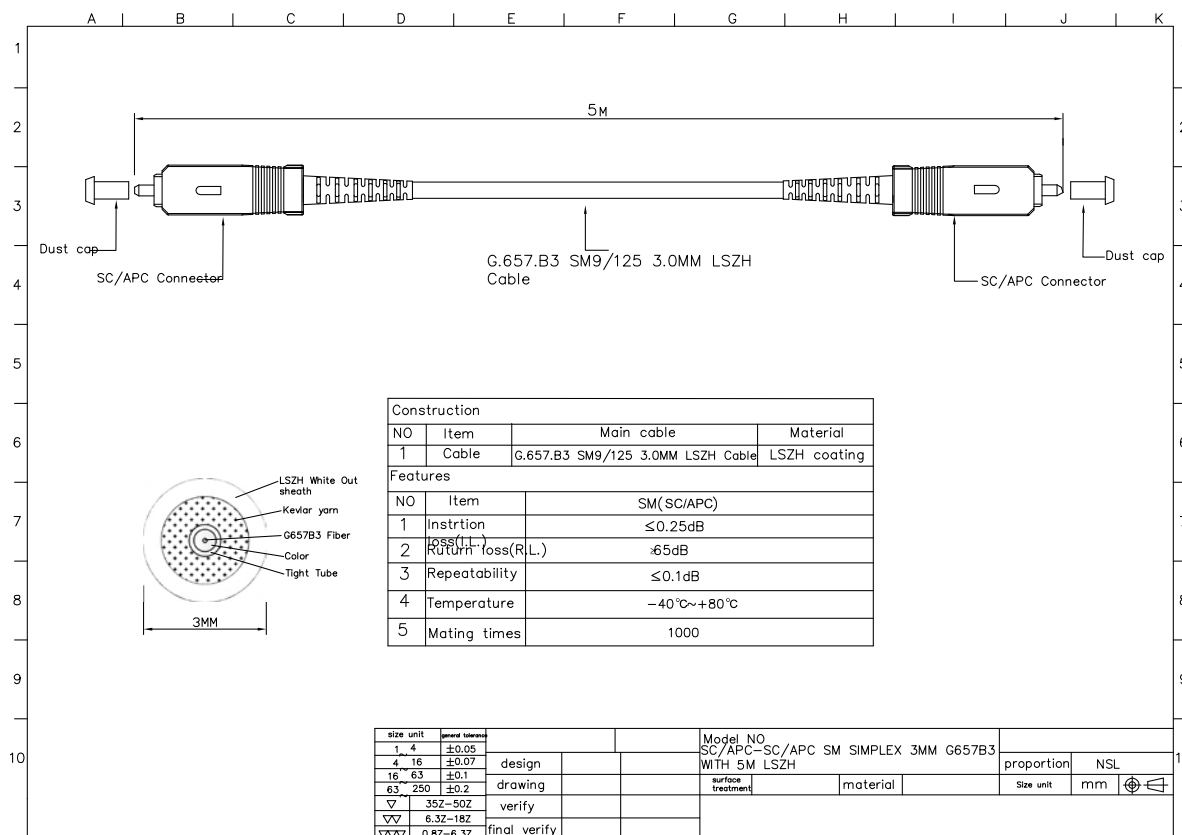
<b>Fiber Cable Type</b>	• Simplex Optical Fiber Cable	<b>Radius of curvature:</b>	• 30 mm
<b>Fiber Type:</b>	• SM G657.B3	<b>Cycles:</b>	• LSZH Jacket in White Color
<b>Cable Jacket &amp; Color:</b>	• LSZH Jacket in White Color	<b>Maximum Allowable Load Single fiber Cord:</b>	• >1000 insertions
<b>Exterior cable diameter:</b>	• 3.0mm	<b>Maximum traction Rupture Single fiber Cord:</b>	• 30N
<b>Patch Cable Length:</b>	• Available in 1,3,5 meters	<b>Standards:</b>	• EN 50377-7-4 • IEC 61754-20 • EN 50377-4-2 • ITU-T G.652
<b>Connector Type on both sides:</b>	• SC/APC to SC/APC		
<b>Insertion Loss (max.):</b>	• SC/APC $\leq 0,3$ dB		
<b>Return Loss:</b>	• SC/APC $\geq 60$ dB		

# White Fiber Patch Cord SM Simplex 5MTR SC/APC-SMS5

## APPLICATION

- Testing equipment
- FTTX+LAN
- Optical fiber CATV
- Optical communication system
- Telecommunication

## FIBER OPTIC PATCH CORD DETAIL



GDI reserves the right to make changes to the product at any time without notice. Information provided by GDI Technology is believed to be accurate and reliable. However, no responsibility is assumed by GDI Technology for its use, nor for any infringements of patents or other rights of third parties which may result from its use.

GDI Technology products are not authorized or warranted for use as critical components in equipment that requires an extremely high level of reliability. A critical component is any component of a life support device or system whose failure to perform can be reasonably expected to cause the failure of the life support device or system, or to affect its safety or effectiveness.