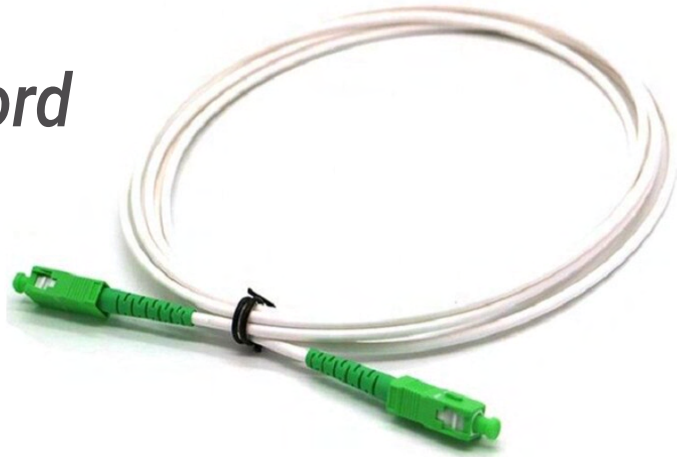


White Fiber Patch Cord SM Simplex 3MTR SC/APC-SMS3



Patch cord SM G657B3 SC/APC-SC/APC Flexible White Cable

Simplex SC/APC Fiber Optic Patch cord with G.657.B3 fiber are a suitable solution for FTTH end connection of ONT units, or in high-density switchboards where there is a risk of critical bending. The G.657.B3 fiber is resistant to 0.5 cm macro-bends, and thus ensures full transmission of the light signal even under difficult conditions of mechanical deformation.

FEATURE

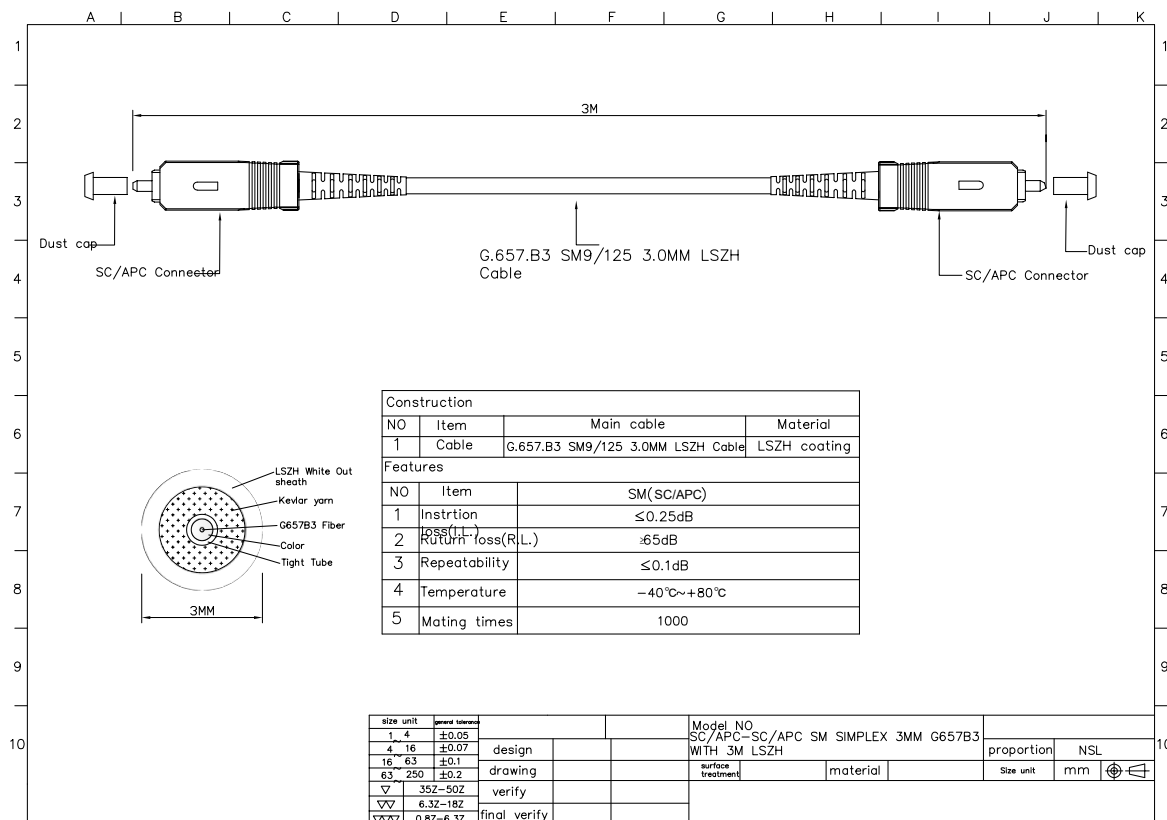
Fiber Cable Type	• Simplex Optical Fiber Cable	Radius of curvature:	• 30 mm
Fiber Type:	• SM G657.B3	Cycles:	• LSZH Jacket in White Color
Cable Jacket & Color:	• LSZH Jacket in White Color	Maximum Allowable Load Single fiber Cord:	• >1000 insertions
Exterior cable diameter:	• 3.0mm	Maximum traction Rupture Single fiber Cord:	• 30N
Patch Cable Length:	• Available in 1,3,5 meters	Standards:	• EN 50377-7-4 • IEC 61754-20 • EN 50377-4-2 • ITU-T G.652
Connector Type on both sides:	• SC/APC to SC/APC		
Insertion Loss (max.):	• SC/APC $\leq 0,3$ dB		
Return Loss:	• SC/APC ≥ 60 dB		

White Fiber Patch Cord SM Simplex 3MTR SC/APC-SMS3

APPLICATION

- Testing equipment
- FTTX+LAN
- Optical fiber CATV
- Optical communication system
- Telecommunication

FIBER OPTIC PATCH CORD DETAIL



GDI reserves the right to make changes to the product at any time without notice. Information provided by GDI Technology is believed to be accurate and reliable. However, no responsibility is assumed by GDI Technology for its use, nor for any infringements of patents or other rights of third parties which may result from its use.

GDI Technology products are not authorized or warranted for use as critical components in equipment that requires an extremely high level of reliability. A critical component is any component of a life support device or system whose failure to perform can be reasonably expected to cause the failure of the life support device or system, or to affect its safety or effectiveness.